

Name _____

Date _____

**P.I.
Pedigree
Investigator**










On the Case of
Nicotine Addiction

Imagine you are an investigator looking for genes that influence nicotine addiction. Log on to: <http://gslc.genetics.utah.edu/units/addiction> and click on *EXPLORE! P.I. Pedigree Investigator, On the Case of Nicotine Addiction*. Complete the activity to gather information for your study.

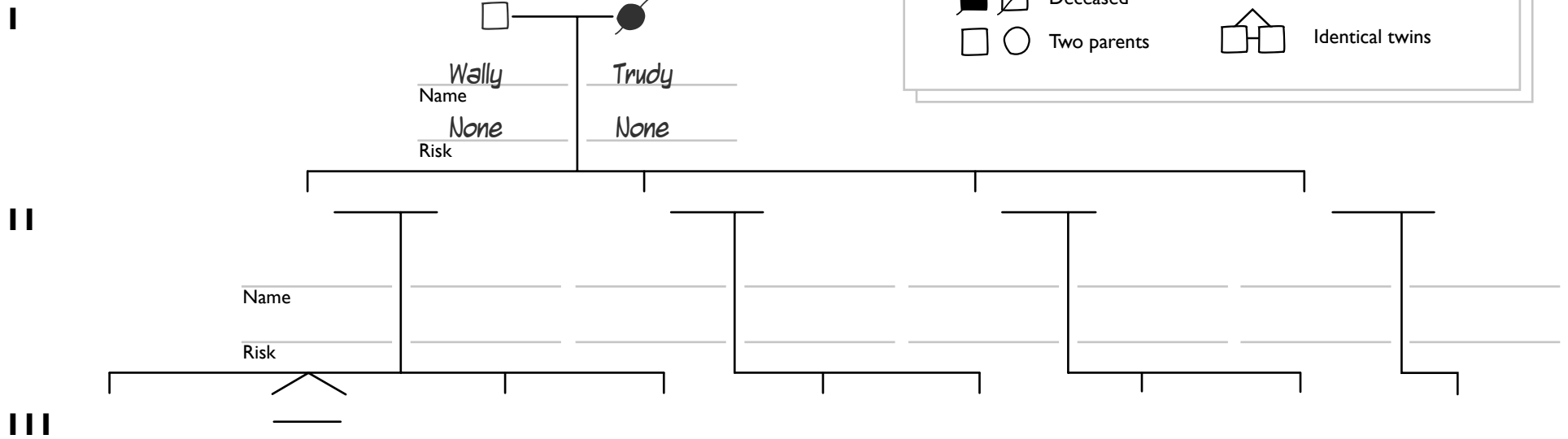
View the video interviews, written surveys, and official records for the Marshall family. Fill in the chart below with the appropriate symbol for each family member. Be sure to record any risk factors that are discussed as well.

- Risk factors** for the Marshall family may include:
- ☒ Depression
 - ☒ Attention Deficit Hyperactivity Disorder (ADHD)
 - ☒ Engaging in risky behavior
 - ☒ None

Symbol Key:

	Male		A family: I and II are generations
	Female		
	Affected		
	Deceased		Identical twins
	Two parents		

Pedigree Chart:



Name _____

Risk _____